

7240 CROSS PARK DRIVE OFFICE FOR LEASE



**BRIDGE
COMMERCIAL**



OFFICE AVAILABLE IN NORTH CHARLESTON

**3,000 SF
AVAILABLE**

**NORTH CHARLESTON, SC
29418**

AMPLE PARKING

HAGOOD S. MORRISON, SIOR | Vice President | +1 843 830 9108 | hs.morrison@bridge-commercial.com
COLBY FARMER | Associate | +1 843 990 7882 | colby.farmer@bridge-commercial.com

7240 CROSS PARK DRIVE OFFICE FOR LEASE

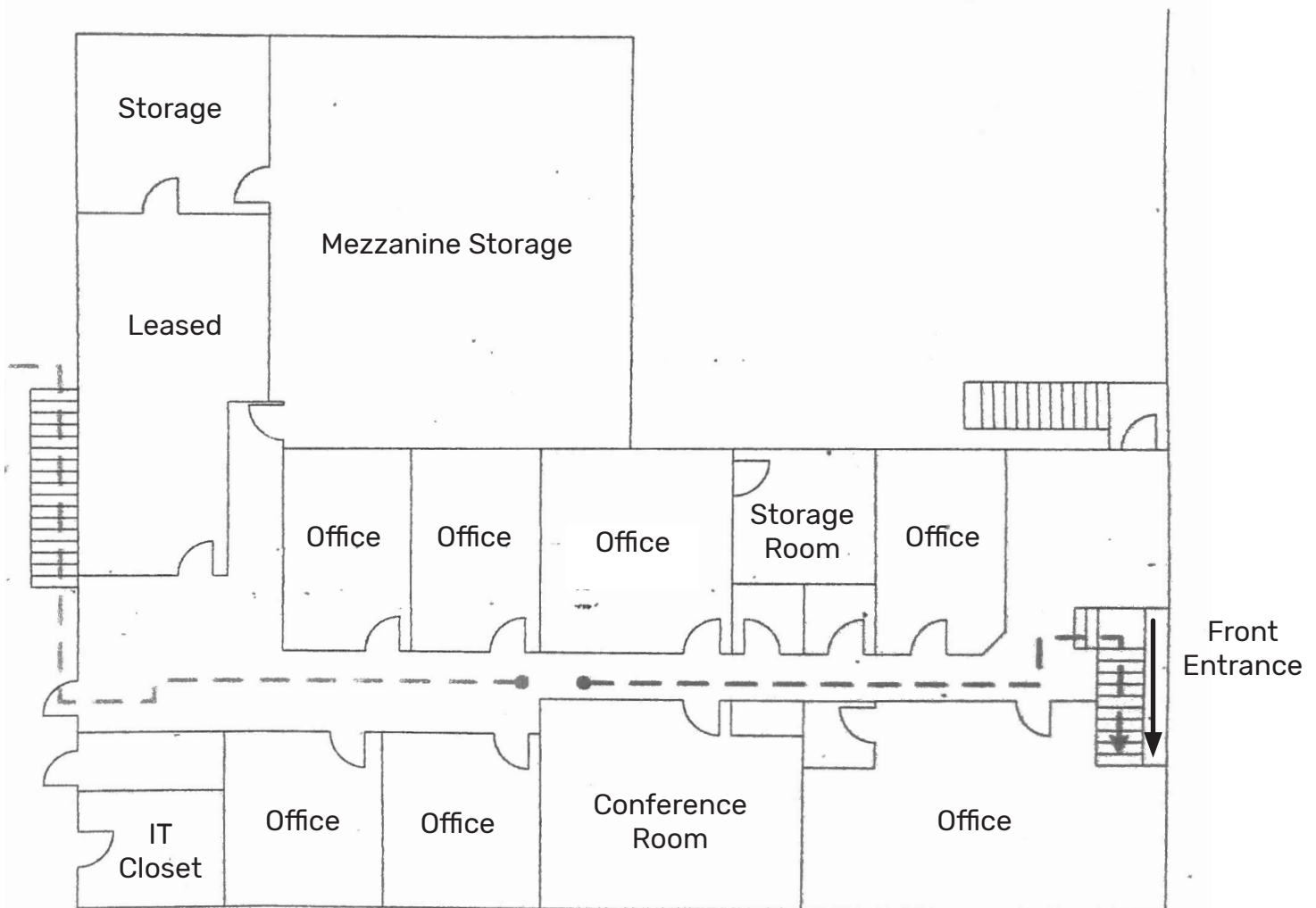


**BRIDGE
COMMERCIAL**

SUMMARY OF OFFERING

7240 Cross Park Drive is a 6.10 acre property zoned Light Industrial in North Charleston, South Carolina. The property is improved with a 106,353 SF metal warehouse built in 1996. 7240 Cross Park is offering flexible second floor office space for lease located in the heart of North Charleston along the Ashley Phosphate corridor. The space is accessed by a dedicated door leading directly upstairs to the suite. The suite offers 7 offices, a storage room, conference room and 3 bathrooms. In addition to storage within the office there is additional mezzanine storage contiguous with the office.

FLOOR & SITE PLAN

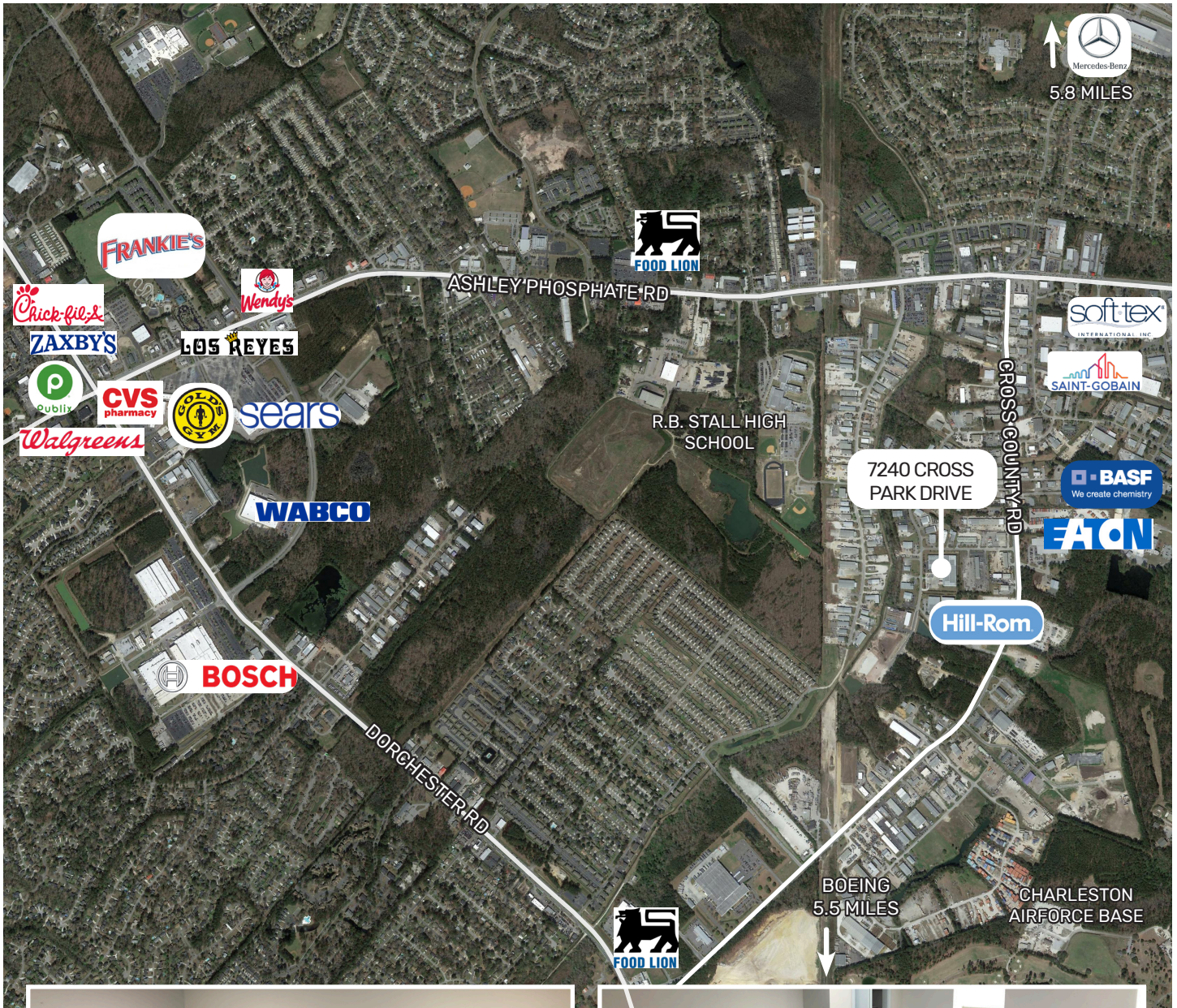


7240 CROSS PARK DRIVE FOR LEASE



**BRIDGE
COMMERCIAL**

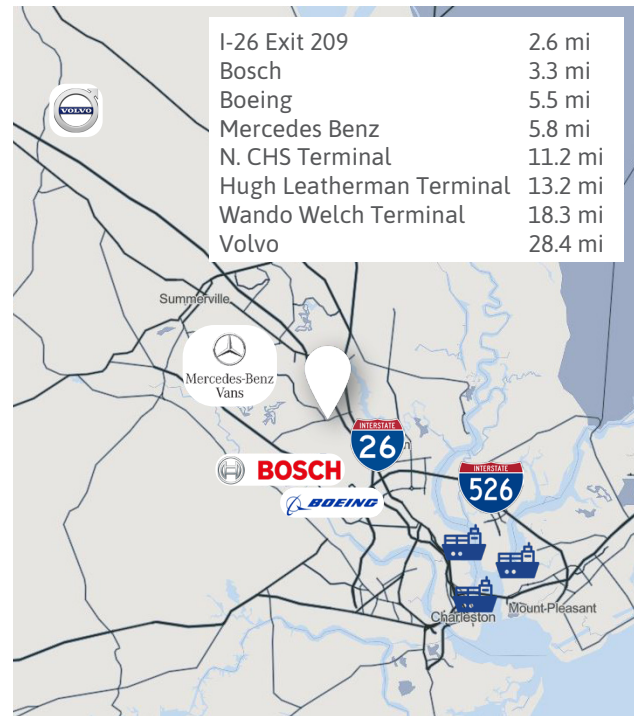
LOCATION OVERVIEW





7240 CROSS PARK DRIVE OFFICE FOR LEASE

Rental Rate \$12.00 Full Service
SF Available 3,000 SF
City North Charleston
County Charleston
Comments 7240 Cross Park is offering flexible second floor office space for lease located in the heart of North Charleston along the Ashley Phosphate corridor. The space is accessed by a dedicated door leading directly upstairs to the suite. The suite offers 7 offices, a storage room, conference room and 3 bathrooms. In addition to storage within the office there is additional mezzanine storage contiguous with the office.



**BRIDGE
COMMERCIAL**

HAGOOD S. MORRISON, SIOR | Vice President | +1 843 830 9108 | hs.morrison@bridge-commercial.com

COLBY FARMER | Associate | +1 843 990 7882 | colby.farmer@bridge-commercial.com

Bridge Commercial makes no guarantees, representations or warranties of any kind, expressed or implied, including warranties of content, accuracy and reliability. Any interested party should do their own research as to the accuracy of the information. Bridge Commercial excludes warranties arising out of this document and excludes all liability for loss and damages arising out of this document.